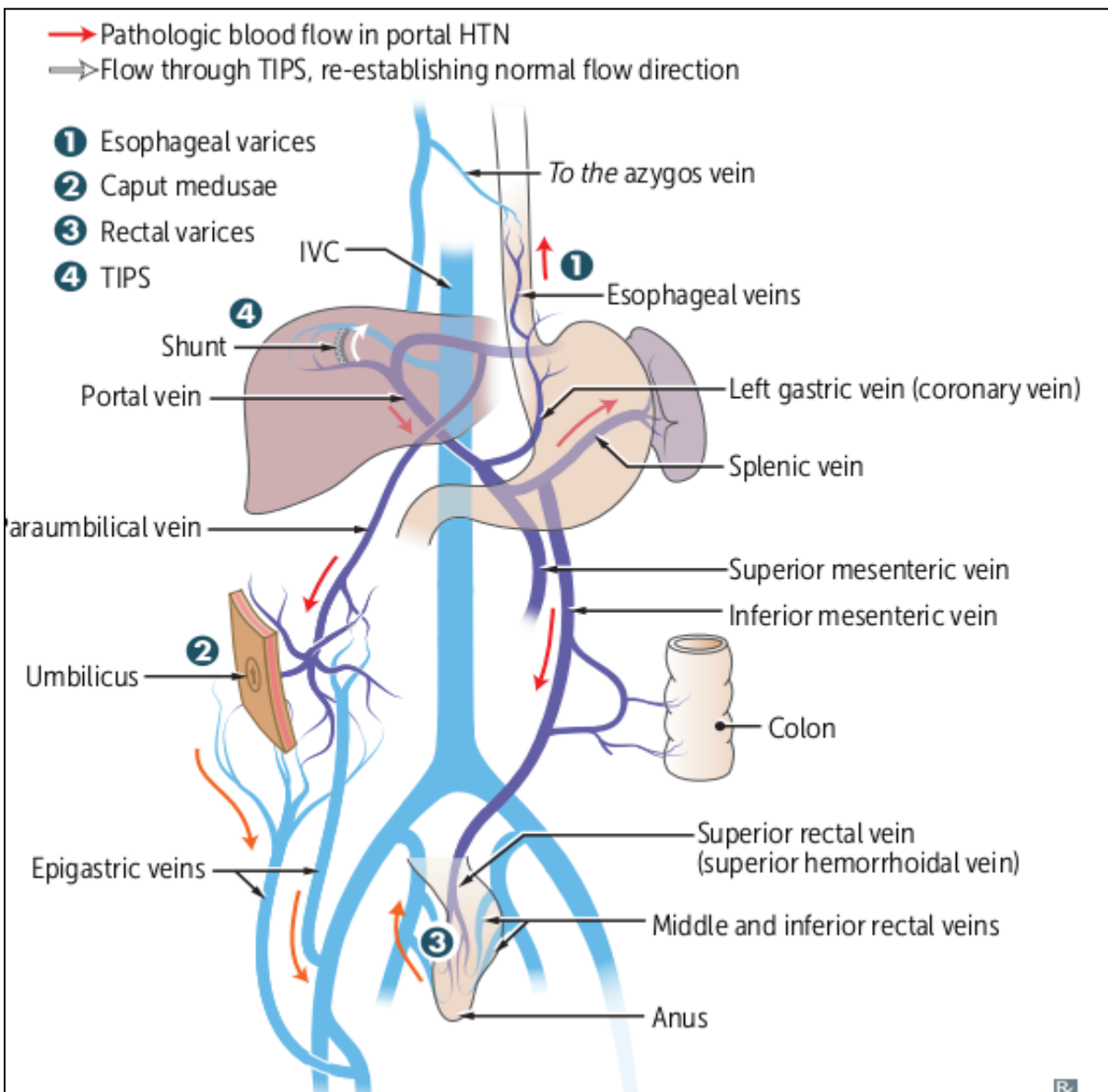




Unit V – Problem 2 – Anatomy: Porto-Systemic Anastomosis



Site Of Anastomosis	Clinical Sign	Portal↔Systemic
(1): Esophagus	Esophageal varices	Left gastric ↔ esophageal
(2): Umbilicus	Caput medusae	Paraumbilical ↔ small epigastric veins of the anterior abdominal wall
(3): Rectum	Anorectal varices (not internal hemorrhoids!)	Superior rectal ↔ middle and inferior rectal

- *Varices of gut, butt and caput (medusae) are commonly seen with portal hypertension.*
- *Treatment with a transjugular interhepatic portosystemic shunt (TIPS) (4) between the portal vein and hepatic vein percutaneously relieves portal hypertension by shunting blood to the systemic circulation.*